

Onthel Bicycle: Creation Model of Experimental Photography using Iwan Zahar Method

I Made Dennis Penn Yohan Kayansa^{1*}, I Nengah Wirakesuma²

^{1,2}*Institut Seni Indonesia Denpasar, Indonesia*

***Corresponding Author:** *dennisyohan00@gmail.com*

Abstract: In Indonesia, the development of bicycles was heavily influenced by the colonialists, especially the Dutch. They brought bicycles produced in their country to use around to enjoy the fresh nature of Indonesia. This habit was transmitted to the aborigines with blue blood. Finally, the bicycle became a prestigious means of transportation. Onthel bicycles were a means of transportation that were relatively expensive before the independence period. Onthel bicycles, also known as camel bicycles, kebo bicycles, or pit pancal, are standard bicycles with 28-inch tires that were commonly used by urban communities until the 1970s. The heritage factor and the classic shape of the bicycle are interesting to be used as an experimental bicycle photography work. Starting from this phenomenon, the authors argue that research related to bicycles is necessary and interesting to do because in the globalization or modern era which is full of modern lifestyle offers, bicycles actually choose a classic lifestyle.

Keywords: experimental photography, Iwan Zahar method, onthel bicycle, model of creation, photography.

History Article: Submitted 17 January 2023 | Revised 23 February 2023 | Accepted 22 March 2023

How to Cite: Kayansa, I M. D. P. Y. & Wirakesuma, I N. (2023). Onthel Bicycle: Creation Model of Experimental Photography using Iwan Zahar Method. *Journal of Aesthetics, Creativity and Art Management*, 2(1), 32-35. DOI: 10.31091/jacam.v2i1.2320

Introduction

In Indonesia, the development of bicycles was heavily influenced by the colonialists, especially the Dutch. They brought bicycles produced in their country to use around to enjoy the fresh nature of Indonesia. This habit was transmitted to the aborigines with blue blood. Finally, the bicycle became a prestigious means of transportation. Bicycles first appeared in Yogyakarta. Yogyakarta is one of the important cities that existed in the early 20th century. In the beginning, the Dutch Colonial Government at that time imported bicycles from Europe to be brought to Indonesia to facilitate the transportation of the Dutch military and people.

Onthel bicycles were a means of transportation that were relatively expensive before the independence period. The price offered for an onthel bicycle from this brand is very expensive. Even the price of one bicycle can be exchanged for 3 tons of rice. This is what makes Bumiputra unable to buy and ride an onthel bicycle. Only the aristocratic class and the rich can afford bicycles. Onthel bicycles, also known as camel bicycles, kebo bicycles, or pit pancal, are standard bicycles with 28-inch tires that were commonly used by urban communities until the 1970s. The onthel bicycle refers to a Dutch designed bicycle which is

characterized by an upright sitting position and has a reputation for being very strong and high quality.

The heritage factor and the classic shape of the bicycle are interesting to be used as an experimental bicycle photography work. In addition, there are many other aspects related to onthel bicycles that provide challenges as the subject matter of bicycle photography. Apart from their popularity among fans/collectors, onthel bicycles are still used by some people as a means of transportation, such as to sell to the market, to the fields or around to exercise, to various bicycle parts. the onthel itself and its accessories have helped strengthen the historical identity of the onthel bicycle.

Methodology

The concept is a reference used by the creator in creating a work of art (Palgunadi, 2008: 436). In addition, the concept is an idea or abstraction of a characteristic event into a complete awareness. Designing an important work requires a solution method to obtain a clear step that can be used as a reference for creating a conceptual work of art. In creating experimental photographic works, the creator is based on the methodology in photography which is used as a reference to dissect the knowledge in photography related to experimental, storyboarding, and gimmicks. In general, methodology is the study of human behavior in creating a work of art.

Results and discussion

Due to Iwan Zahar's photographic method, the experimental method is a method of research on an object or data that is used to look for the effect of a particular treatment on others under controlled conditions (Sugiono, 2011: 72). Onthel bicycles or also known as camel bicycles, kebo bicycles, or pit pancal are standard bicycles with 28 inch tires which were commonly used by urban communities until the 1970s. Characteristic is closed chain housing. With teeth that cannot be changed and usually there is a dynamo on the front wheel to turn on the lights. This bike is also equipped with drum brakes for braking.

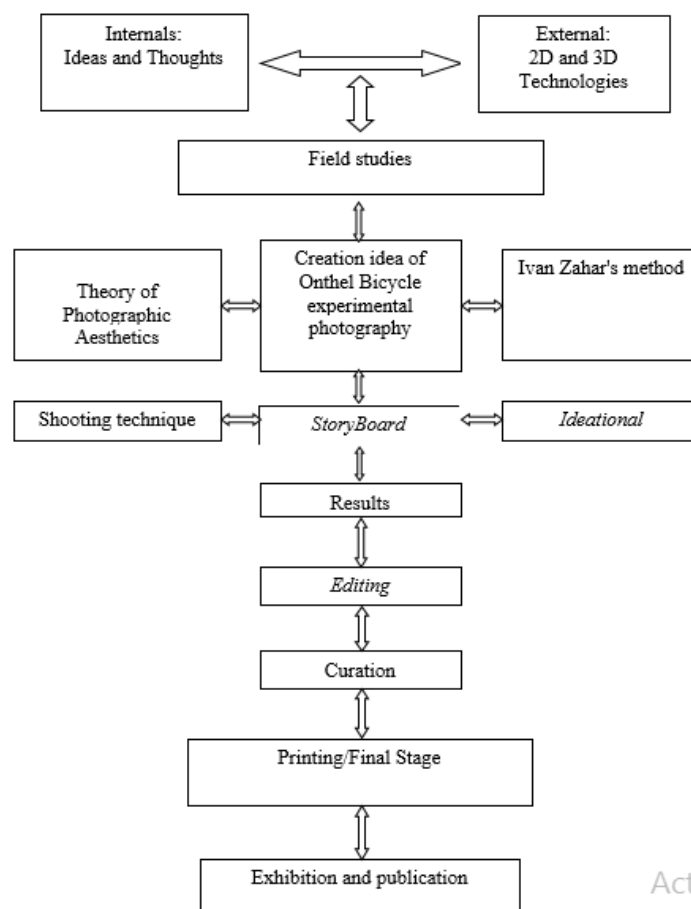
The creator introduces a new idea in introducing bicycle experimental photography. In general, photography is a medium for conveying information, but in this creation, the creators package it with aesthetic elements that are presented through two-dimensional and three-dimensional forms. Using technology to become a new medium that is present in photographic works, in this creation the creator tries to apply an experimental process in the form of using a Dinamo Power Window, cables, wall sockets, Power Supply Adapters, and Dimmers as activators and animate movements in three-dimensional works and installation art works. The form of the media's understanding of the element of creator freedom in a work of art is reflected by presenting a photo-taking technique for three-dimensional works, namely extreme close-ups to take details of the parts to be displayed.

Storyboard is a sketch or description of the key momentum of the activity. Some think that the storyboard is a comic-strip that describes the events in the film. The storyboard contains an explanation of the motion, the camera's point

of view and the directions. Storyboard through experimental photography of bicycles is presented for visualization.

Gimik is a term that refers to the use of packaging, displays, tools, and a series of scenes to trick, surprise and create an atmosphere. In general, photos are presented in the form of photo paper, canvas, and in synthetic form. Addhesive prints are something that creators excel at in creating photographic art in photographic works, because later there will be a drilling process on the part of the mold to install cables or tools such as Dinamo Power Window, Power Supply Adapters, and Dimmers. In the world of photography, in general, photographic artists present photos in the form of media, which can be said to be monetary, in the form of two dimensions or photo paper or canvas. In this creation, the creator presents a different thing in the form of a photo installation which is a form of creator's freedom in presenting a photographic work that can be positioned in the field of pure art. Gimik is used to get the packaging for the onthel bicycle installation work that the creator uses in one of the experimental bicycle photography works, besides that the creator also presents the installation art work, namely the rotation of the two bicycle wheels, turning on the part of the bicycle light that is present in the photographic artwork.

The creation model found is as follows:



[Source: Kayansa, 2023]
Figure 1. Creation Model

Activ
1

Conclusion

In the creation of this work, the author can draw the conclusion that experimental bicycle photography is a process of experiments carried out by the creator with the object of bicycles combined with photographic works using technology. Through this experimental bicycle photography work, it is hoped that the public will recognize and preserve this ancient bicycle.

References

- Bandara.id. (2015) Profil Bandara Internasional Ngurah Rai, Denpasar Bali.
- Bentara Budaya Yogyakarta (BBY). (2013). Seri Lawasan Pit Onthel. Carapedia.com, Tentang Sepeda Onthel.
- Djelantik, A. A. M. (2004). *Estetika sebuah pengantar*, Jakarta: MPSI.
- Katadata.co.id. (2022). Jumlah Kunjungan Wisata Mancanegara (Wisman) ke Bali.
- Nugroho, R. A. (2006), *Kamus Fotografi*, Yogyakarta: Penerbit Andi.
- Picard, M. (2006). Bali: Pariwisata Budaya dan Budaya Pariwisata. Jakarta: Kepustakaan Populer Gramedia.
- Raharjo, J. B. (1986). *Himpunan Materi Pendidikan Seni Rupa*. CV. Yrama: Bandung.
- Roose-Evans, J. (1989). *Eksperimental Theatre, From Stanislavsky to Peter Brook*.
- Salim, P. & Salim, Y. (1991). *Kamus Bahasa Indonesia Kontemporer*, Jakarta: Modern English Press.
- Sidik, F. & Prayitmo, A. (1979). *Desain Elementer*, Yogyakarta: STSRI "ASRI".
- Soedjono, S. (2007). *Pot-Pourri Fotografi* Jakarta, Jakarta: Penerbit Universitas Trisakti.
- Soelarko, R.M. (1978). *Komposisi Fotografi*, Bandung: PT. Indira.
- Sttbandung.ac.id, Sepeda Onthel.
- Suryahadi, A. A. (1994). *Pengembangan Kreativitas melalui Seni Rupa*, Yogyakarta: Pusat Pengembangan Guru Seni Rupa
- Travelingyuk.com. (2018). Presiden Ir. H. Joko Widodo mengomentari foto salah seorang wisatawan di Bali.